

# STRUMICA OPEN 2014

BULLETIN No. 1-2

## Middle WRE Race



СТРУМИЦА



Агенција за млади и спорт



STRUMICA OPEN



MACEDONIA - STRUMICA

25-29 June 2014

**5 DAYS 5 RACES**

[www.strumicaopen.mk](http://www.strumicaopen.mk)

[info@strumicaopen.mk](mailto:info@strumicaopen.mk)

# CONTENTS:

BULLETIN No. 1 - 2

## CONTENTS:

1. WELCOME TO STRUMICA OPEN 2014
2. ORGANIZERS
3. EVENT CENTRE
4. COMPETITION OFFICIALS
5. ACCREDITATION, EVENT AND MEDIA CENTRE WITH ACCESS INFORMATION
6. PROGRAM (TYPE OF RACES)
7. DEADLINE AND FINAL ENTRIES
8. PAYMENTS
9. COMPETITION RULES
10. START NUMBERS
11. CHECK-IN AND QUARANTINE ZONES
12. COACHING AND TEAM ZONES
13. CLASSES
14. CLOTHING
15. PUNCHING AND TIMING SYSTEM
16. TRAINING OPPORTUNITIES
17. EMBARGOED AREAS
18. MAPS DETAILS
19. TERRAIN DESCRIPTION
20. ACCOMMODATION AND FOOD SERVICES
21. BANQUET
22. TRANSPORT AND PARKING
23. LOCAL WEATHER AND CLIMATE
24. VISA REQUIREMENTS
25. MEDIA SERVICES
26. SPONSORS
27. ADDITIONAL INFORMATIONS
28. HOST TOWN



# 1. WELCOME TO STRUMICA OPEN 2014

Dear orienteering friends, dear guests and officials,

In 2011 Macedonia was host of the SEEOC 2011 so we have good background in organizing big and important event. In 2014 Macedonia and OC Edelvajs will organize EYOC 2014 and accompanying event Strumica OPEN 2014, so once again we will have a new challenge and chance to show you our good offer of challenging orienteering terrains, our hospitality and great night life in the city.

In October 2013 we had a rehearsal of EYOC 2014 by organizing Strumica OPEN 2013. Now, we are inviting you to take part in Strumica OPEN 2014 which will be held together with EYOC, at the same terrains. For WRE race we have made a new map on the new terrain.

It will be our pleasure to host you and show you what our beautiful country and city can offer. We have prepared interesting program. Activities will start on Wednesday – 25th June with training and will last until Sunday. During 4 competition days you can take part in 5 races – day sprint, night short, long distance, middle distance and middle WRE.

We are looking forward to your visit!

It will be our great pleasure if You take part of this Event and meet our country with our beautiful terrains for orienteering.

Strumica is a modern city , sports city , with a lot of young people and in the last 10 years it is the host of a lot of regional and European championships and events.

The event will start at 25-th June and will last till 29-th June. During this 5 days there will be 5 races : Sprint , Night short, Long, Middle and Middle WRE race.

Come and be part of this Event and show Your best Orienteering qualities!!!  
See You soon in Strumica,

Riste Kirov  
Event Director,



## 2. ORGANIZERS

|                                            |                                                                     |
|--------------------------------------------|---------------------------------------------------------------------|
| CHAIRMAN                                   | - Mr Zoran Zaev – Mayor of Strumica                                 |
| EVENT DIRECTOR                             | - Mr Riste Kirov ++38971239798                                      |
| SECRETARY & FINANCE                        | - Mrs Slobodanka Kostova ++38975387607                              |
| TECHNICAL DIRECTOR                         | - Mr Toni Kostov ++38970387650                                      |
| EVENT CENTRE                               | - Miss Biljana Serafimovska ++38970945845                           |
| NATIONAL CONTROLLER                        | - Mr Gorgi Kostov ++38978201110                                     |
| ACCOMMODATION                              | - Miss Verica Terzieva ++38978442131                                |
| MEDIA & MARKETING                          | - Mr Vase Iliev ++38971271428                                       |
| IT DIRECTOR                                | - Miss Jana Sandieva (Bul)                                          |
| COMPETITION MAPS:<br>Fieldwork and drawing | - Georgi Hadzimitsev (Bul), Dian Bonev (Bul), Georgi Kartalov (Bul) |



### 3. EVENT CENTRE

The Event Centre of championships will be in the Hotel Sirius.  
The Event Centre has its own conference hall and internet connection.

The Media Centre will be located in the Hotel Gligorov.

Opening hours of the Event Centre:

| Date           | Event                                        | Hour           |
|----------------|----------------------------------------------|----------------|
| 25TH JUNE 2014 | Opening Event Centre<br>Closing Event Centre | 08:00<br>23:00 |
| 26TH JUNE 2014 | Opening Event Centre<br>Closing Event Centre | 08:00<br>23:00 |
| 27TH JUNE 2014 | Opening Event Centre<br>Closing Event Centre | 08:00<br>23:00 |
| 28TH JUNE 2014 | Opening Event Centre<br>Closing Event Centre | 08:00<br>23:00 |
| 29TH JUNE 2014 | Opening Event Centre<br>Closing Event Centre | 08:00<br>17:00 |

EVENT CENTRE ADDRESS:  
Hotel Sirius  
2400 Strumica  
Republic of Macedonia  
**GPS : 41.244669, 22.390738**

PRESS CENTRE & V.I.P CENTRE  
Hotel Gligorov  
bul. Kliment Ohridski bb.  
2400 Strumica  
Republic of Macedonia  
**GPS : 41.2621974, 22.385848**



# 4. COMPETITION OFFICIALS

## Mapping and course setting

Mapping Team :

Georgi Hadzimitsev, Dian Bonev, Georgi Kartalov

Course Setters:

Sprint, Night short, Long, Middle and Middle WRE: Georgi Hadzimitsev , Dian Bonev, Georgi Kartalov and Toni Kostov

## Event Controllers and Jury

Event Controller: Gorgi Kostov (MKD)

IOF Event Adviser: Zoran Milovanovic (SRB)

Jury: It will be announced on the first team leader meeting.

# 5. ACCREDITATION, EVENT AND MEDIA CENTRE

The Accreditation and Event Centre is located in the Hotel Sirius.

**IMPORTANT:** Also, teams will be asked to supply the phone numbers of team contact persons so that the organizers can contact team officials if necessary.

## ACCESS (LOCATION)

Strumica is 170km South-East from Skopje. The fastest way to go to Strumica is drive on Highway E75 to the exclusion of Valandovo city, than go to through the local road Valandovo - Strumica.

Other way to get in strumica is to drive following route:

Skopje - Veles - Stip - Radovis - Strumica



## 6. PROGRAM (TYPE OF RACES)

25 June Wednesday  
- Arriving  
- Training

26 June Thursday  
- Start 13:00 E1 - Sprint  
- Start 21:00 E2 - Night Sprint

27 June Friday  
- Start 12:00 E3 - Long

28 June Saturday  
- Start 12:00 E4 - Middle

29 June Sunday  
- Start 10:00 E5 - Middle WRE

Detail program will be announced in Bulletin No.3.

| TYPE OF RACES                           |
|-----------------------------------------|
| <i>June 26: Sprint<br/>Night Sprint</i> |
| <i>June 27: Long</i>                    |
| <i>June 28: Middle</i>                  |
| <i>June 29: Middle WRE</i>              |

Also we want to notice that in the same time of Strumica Open international competition, will be held and EYOC 2014 and there will be amazing atmosphere on the terrains!!! On 29.06.2014 will be the middle WRE race. For the details of the terrains please look in the field "Terrain descriptions".

## 7. DEADLINE AND FINAL ENTRIES AND FEES

Final Entry Forms for teams (including for each team member: the full name, class/category, Si card number, country and World Ranking ID only for Elite) must be registered at: <http://www.orienteeringonline.net/CompetitionBasicInfo.aspx?CompetitionID=1312> or to be sent to Strumica Open official mail: [info@strumicaopen.mk](mailto:info@strumicaopen.mk)  
Important Deadlines and fees

Entries until 15.04.2014

M/W – 12, 14, 16 classes 30EUR for all stages or 8EUR per stage

M/W – all other classes 45EUR for all stages or 11EUR per stage

Free of charge for M/W10

Entries until 10.06.2014

M/W – 12, 14, 16 classes 40EUR for all stages or 10EUR per stage

M/W – all other classes 55EUR for all stages or 13EUR per stage

Free of charge for M/W10

**Please Note:** Reduced entry fees for competitors from Bulgaria, Moldova, Romania, Croatia, Greece, Montenegro, Bosnia and Herzegovina, Cyprus, Turkey, Serbia and Macedonia.



# 8. PAYMENTS

Payments for all race entries and accommodation should be paid by one of the following methods:

Through a Bank to:

## BANC ACCOUNT

|            |                                                                                     |
|------------|-------------------------------------------------------------------------------------|
| PAY TO:    | Edelvajš Strumica Macedonia<br>St. Braka Miladinovi br.18 2400 Strumica, Macedonia, |
| IBAN:      | MK 07210722000008506                                                                |
| BANK NAME: | NLB Tutunska Banka A.D Skopje                                                       |
| SWIFT:     | TUTNMK22                                                                            |
| MEMO:      | STRUMICA OPEN 2014                                                                  |

Or at the arrival in the Event Centre.

**Contact person: Slobodanka Kostova-Financial Director ++38975387607**

**Contact person: Biljana Serafimovska – Event Centre ++38970945845**





## 9. COMPETITION RULES

The competition will be organized in accordance with the rules for IOF Foot Orienteering Events (Version valid from 1 January 2014)

The start interval between two competitors will be as following:

- Sprint Distance Start interval will be 1 minute,
- Night Short Start interval will be 1 minute,
- Long Distance Start interval will be 2 minutes,
- Middle Distance Start interval will be 2 minutes,
- Middle Distance WRE Start interval will be 2 minutes,

See IOF Competition Rules on the IOF website: [www.orienteering.org](http://www.orienteering.org)

## 10. START BIBS

All competitors must wear their respective start bibs at all the Strumica Open 2014 races. The numbers will be handed in the Event Centre to team officials.

In the all 5 races the competitors must wear their start bibs on the front and the same start number will be valid for all 5 races.

The start bibs must be visible and they should not be folded over or cut down.



# 11. CHECK-IN AND QUARANTINE ZONES

There will be quarantine zones for day sprint and night short race.

The quarantine zone for sprint will be located in the school yard and there will be marked places where you may leave your bags.

The quarantine zone for night short will be near finish area.

The organizer will transport your bags to the finish.

Quarantine zones will have toilets and fresh water.

Athletes and coaches must observe the check-in times for each Strumica Open race.

There will be a latest check-in time defined after which no-one will be allowed to enter the quarantine zone any longer.

At the check-in to the quarantine zone, each athlete and coach needs to show their accreditation card or another form of identification like start number.

The use of mobile phones, computers or any other communication devices inside the quarantine zones is strictly forbidden. It is not allowed to bring any maps of the competition areas into the quarantine.

# 12. COACHING AND TEAM ZONES

## Team zones

Only accredited team members and coaches with their personal Strumica Open accreditation cards will be allowed to enter in the team zones. All the team zones are protected from the weather - rain or sunshine.

## Coaching Zones

There will be clearly marked Coaching Zones in the all races close to the finish.

Team coaches may support their athletes as they pass through.

For reasons of fairness only the following actions will be allowed:

- Verbal communication – no written information
- Exchange of personal equipment such as compasses, shoes....
- Food and drinks passed on directly to the athlete



# 13. CLASSES

All classes are listed below:

|              |                                                                              |
|--------------|------------------------------------------------------------------------------|
| <b>WOMEN</b> | W10, W12, W14, W16, W18, W20, W21E, W21A, W21B, W35, W40, W45, W55, W65, W75 |
| <b>MAN</b>   | M10, M12, M14, M16, M18, M20, M21E, M21A, M21B, M35, M40, M45, M55, M65, M75 |
| <b>OPEN</b>  | OPEN 1, OPEN 2                                                               |

# 14. CLOTHING

There are no regulations about clothing. The organizers recommend full – body covered dresses for all races except sprint and night short.

Wearing shoes with Dobb spikes are not allowed in the sprint and night races.



# 15. PUNCHING AND TIMING SYSTEM

The punching system used in Strumica Open races will be Sport Ident. Each competitor who will use its own SI Card must fill the number in the Entry Form. For the competitors who want to RENT SI Card from Organizers (2 euro per SI Card per race), the SI Cards will be given to team leaders when registering on their arrival at the event centre and they will be asked to sign a receipt. Team leaders will have to return them at the event centre in one package per team before departure and there will be a 50 euro charge for any missing Cards. The card will be attributed nominally to all Strumica Open competitors and each card must be used exclusively by the competitor to whom it has been attributed. Competitors finish time will be measured with Sport Ident equipment and, also, will be hand backup system for time measurement.

Overall results will be the sum of day sprint, long, middle and middle WRE. Night short race will be awarded separately. Price giving ceremony will be held separately for Strumica OPEN, night short and WRE race.

The organizers will use 3 radio controls for all races to monitor live results. The results may be followed on 2 monitors, as well as live at the official website: [www.strumicaopen.mk](http://www.strumicaopen.mk)

The use of punching and timing equipment will be demonstrated at the technical model (25.06.2014 from 12:00 to 13:00 at the model event) together with the organization of the start.



## 16. TRAINING OPPORTUNITIES

We have provided 2 training maps with 2 different scales (1:4 000 ; 1:10 000).

Teams may not train in Strumica/Suvi Laki outside the official training areas without the permission of the organizers.

In accordance with official program 25.06.2014 is a day reserved for model event and training (time: 12:00am to 19:00pm) .

There will be no medical services provided at the training areas.

In Macedonia the medical emergency phone numbers is: 194

If you need to call the police, their numbers is: 192

## 17. EMBARGOED AREAS

With reference to the IOF competition Rules (article 26.5) and with a sense of fair-play between athletes, the listed areas are embargoed for all potential Strumica Open team members as well as coaches, team leaders and other persons who may be in position to give information to the team members, until Strumica Open is finished.

In the Embargoed areas:

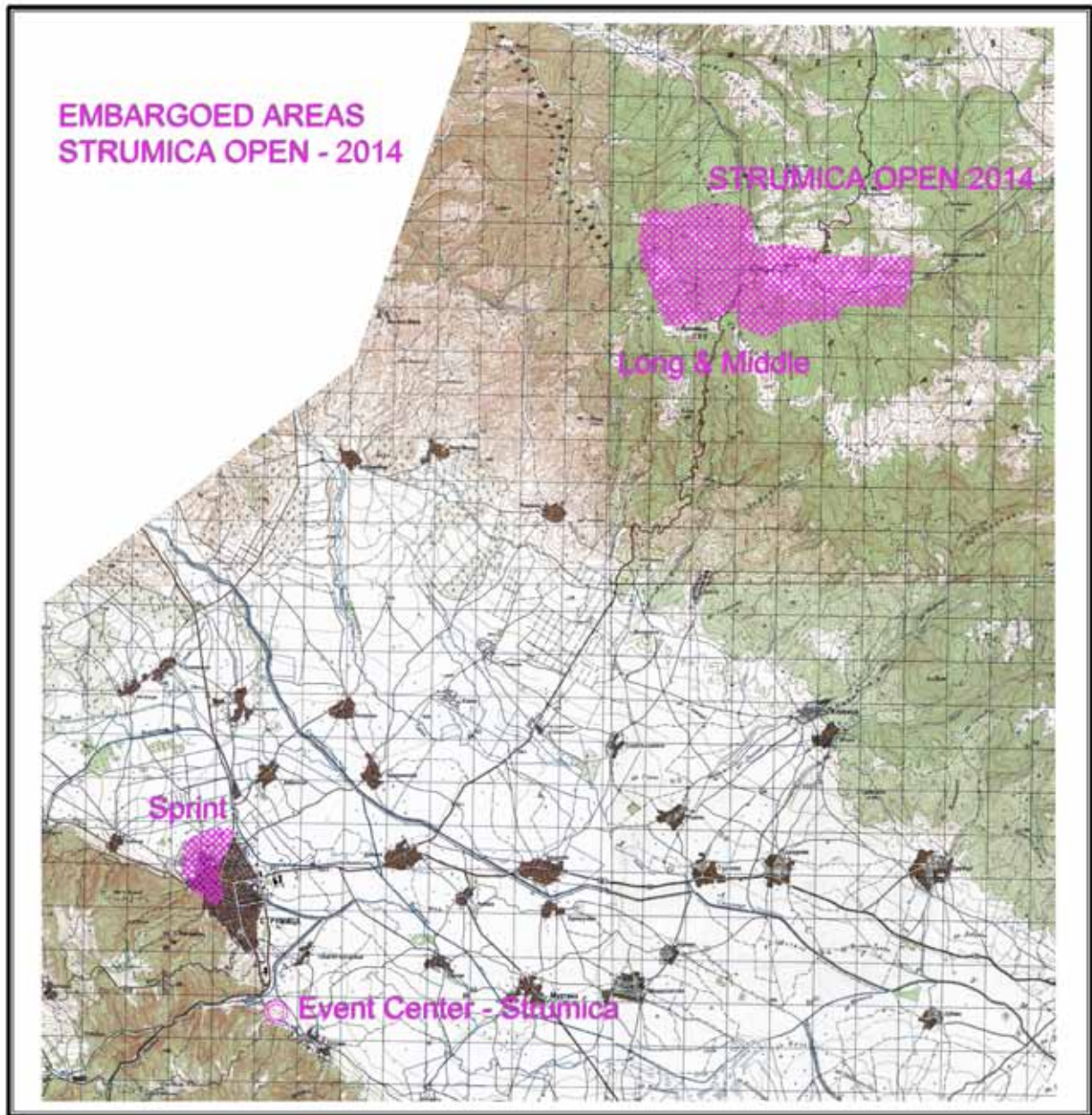
- No organized orienteering activities may take place;
- No training session, route testing, etc. may take place;
- No surveying or other use of maps is permitted.

This refers to potential participants and to persons who may become team leaders, coaches or similar.

It is permissible to pass through the embargoed areas using paved public roads.



# 17. EMBARGOED AREAS



# 18. MAPS DETAILS

Maps are drawn according to the international specifications for Orienteering maps (ISOM 2000) and the international specifications for sprint orienteering maps (ISSOM 2007) they will be printed on 130gr/m<sup>2</sup> paper and issued in sealed plastic bags.

| COMPETITION MAP      | SCALE               | VERTICAL CONTURE INTERVAL | PRINTING     |
|----------------------|---------------------|---------------------------|--------------|
| MODEL EVENT/TRAINING | 1:4 000<br>1:10 000 | 2,5m<br>5m                | Spot<br>Spot |
| SPRINT DISTANCE      | 1:4 000             | 2,5m                      | Spot         |
| NIGHT SHORT          | 1:4 000             | 2.5m                      | Spot         |
| LONG DISTANCE        | 1:10 000            | 5m                        | Spot         |
| MIDDLE DISTANCE      | 1:10 000            | 5m                        | Spot         |
| MIDDLE WRE DISTANCE  | 1:10 000            | 5m                        | Spot         |

All controls will be guarded during the competitions. Organizers` staff may or may not be standing close to the control locations.

Radio controls are not specified on the control descriptions.



# 19. TERRAIN DESCRIPTION

## **SPRINT**

Terrain: Flat , urban, with not to high buildings and houses.

Runability: Very good high speed running

## **NIGHT SHORT**

Terrain: City streets and school areas, urban, flat.

Runability: Very good high speed running.

## **LONG and MIDDLE**

Terrain:

This terrain is situated between 900m and 1200m in altitude. The vegetation alternates between deciduous and coniferous trees, meadows with low vegetation an areas of semi-open forest.

There is a forest with high trees, valleys, hills.

Run ability: Good in the meadows and the semi open forest, but can be poor in some areas with very dense vegetation. Running can vary from fast to very slow.

Visibility: Generally quite good bat can be very limited in areas of dense vegetation.

Roads, paths and tracks: The network of paths, roads and tracks is not very dense.

## **MIDDLE WRE**

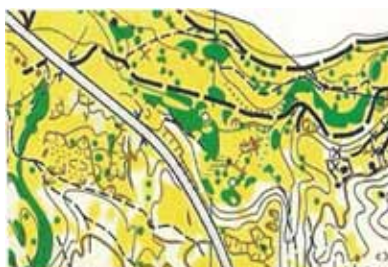
Terrain:

This terrain is situated between 200m and 400m in altitude. The vegetation alternates between deciduous and coniferous trees, meadows with low vegetation an areas of semi-open forest.

Run ability: Good in the meadows and the semi open forest, but can be poor in some areas with very dense vegetation. Running can vary from fast to very slow.

Visibility: Generally quite good but can be very limited in areas of dense vegetation.

Roads, paths and tracks: The network of paths, roads and tracks is not very dense.





## 20. ACCOMMODATION AND FOOD SERVICES

Accommodation bookings can be made by sending a mail to [info@strumicaopen.mk](mailto:info@strumicaopen.mk) with attached Accommodation and Food Entry Form. The Entry Form for accommodation and food can be found in Strumica Open website: [www.strumicaopen.mk](http://www.strumicaopen.mk)

Full Accommodation payment must be done by 10th June 2014 or after arriving in Strumica in the Event Centre.

The Reservation will be made on the **FIRST COME – FIRST SERVE** basis.

The organizer will provide accommodation in B category hotels:

**HOTELS IN CATEGORY B** have single rooms, double bed rooms, triple bed rooms, small restaurant, internet , parking. This category is a 3 stars hotel.

Per night ..... 14 euro

Per night with breakfast ..... 18 euro

Per night full board ..... 25 euro

It is possible to stay in sport hall and camping place for tents. Toilets, showers and drinking water are available.

Prices:

Spot hall - per night..... 3 euro

Per tent - per night..... 5 euro

## FOR 250 YOUNG COMPETITORS - ACCOMMODATION AND FOOD FOR FREE

**IMPORTANT NOTE:** Due to the fact that Strumica Open will be held during EYOC 2014, for the first 250 competitors between 12 and 18 years who will apply up to 15th April 2014, organizer will be provide accommodation and food for free.

### Food

Meals and sandwiches may be purchased at the finish area during competitions days.

Strumica is a city with a lot of restaurants, coffee shops, bars, dairy restaurants, so you can find food everywhere in the city and the prices are very affordable.



## 21. BANQUET

The banquet will be on the 28th June 2014, time: 20.00 -24.00, in one of the restaurants with organized lottery, food, music. More details in final Bulletin. Ticket can be bought in the Event Centre.

**Ticket price: 12 euro per person**

## 22. TRANSPORT AND PARKING

It is allowed to use own transportation for all events. You may use all public parking places in the city and parking place in the long and middle distance arenas – free of charge.

There are no public transport lines in Strumica.

For the officials, VIPs and media there will be provided transport free of charge.

Since the distance from hotels to the long and middle arena is about 25km, for all other guests there is option to pay for transport from the hotel (place of accommodation) to the finish area (for long and middle) - 10 euro per day – per person.

The day sprint and night sprint will be held in the city of Strumica and there is no need for transport because each accommodation is near to the city centre.

***The organizer can provide transport as follows:***

Skopje Airport - Strumica –Skopje Airport ----- 35 eur.

Thessaloniki Airport - Strumica -Thesaloniki Airport----- 38eur.

Sofia Airport – Strumica – Sofija Airport----- 40 eur.

Strumica - Suvilaki - Strumica ----- 10 eur.



## 23. LOCAL WEATHER AND CLIMATE

In June daytime temperatures are from 25 to 35 Celsius. During the night between 15 to 25 Celsius. For current conditions: [www.weather2umbrella.com](http://www.weather2umbrella.com)

## 24. VISA REQUIREMENTS

Citizens from following countries need visa to visit Macedonia: Belarus, Moldova and Armenia.

For all other European countries visitors need just a valid passport to visit Macedonia.

More information for visa requirements to visit Macedonia check here:  
<http://www.mfa.gov.mk/?q=node/308&language=en-gb>

## 25. MEDIA SERVICES

There will be Media and Press centre located in the Hotel Gligorov. All events will be recorded with video cameras and photos.

The day sprint and night short events may be followed live on one big screen at the public square. The Media Centre will be located in the hotel Gligorov.



## 26. SPONSORS



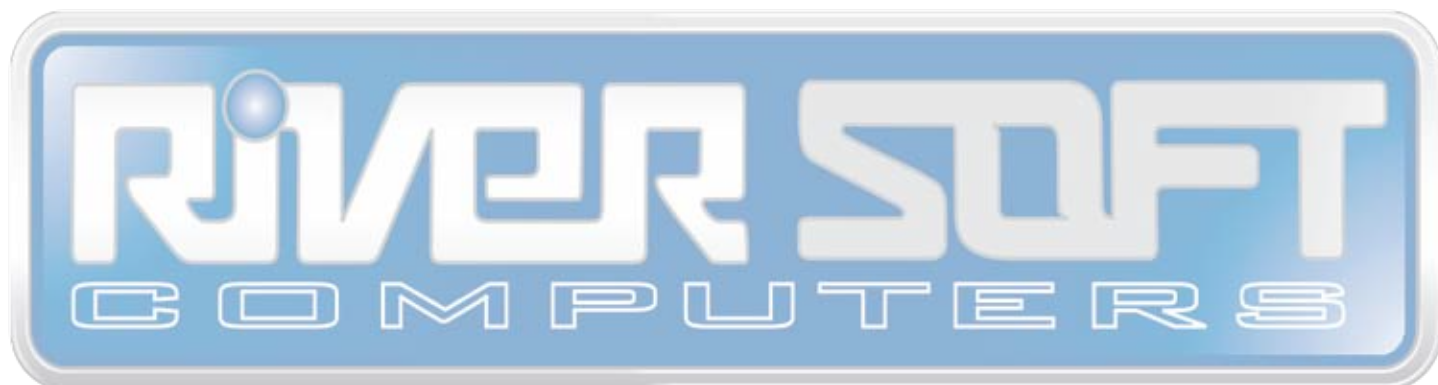
## 27. ADDITIONAL INFORMATIONS

For further information please follow the official website: [www.strumicaopen.mk](http://www.strumicaopen.mk) or contact the Strumica Open 2014 Organizing Committee:

Website: [www.strumicaopen.mk](http://www.strumicaopen.mk)

E-mail: [info@strumicaopen.mk](mailto:info@strumicaopen.mk)

Bulletin No. 3 will be published in June 2014.



# 28. HOST TOWN

Location: The Municipality of Strumica is located in the southeastern part of Macedonia . It extends from 41 19' to 41.30' northern latitude and 22° 28' to 22° 49' eastern longitude. Strumica is located at a distance of 22 kilometres from the border with Bulgaria.

Area: 322 square kilometres.

Elevation: 256 m

Population: 54 636 inhabitants, Strumica itself : 35 311 Inhabitants (census 2002 )

Founded: First documented in the year 181 under the name Astraion.

Mountains: Belasica (1883 m), Ograzden (1746 m), Elenica ( 970 m )

Rivers: Strumica ( 34,50 km ) , Vodocha ( 20,50 km ) , Turija ( 9 km ) Trakajna ( 4.96 km ).

Climate:Mediterranean.

Temperatures: 2/3 of the days in the year the temperature is above 10°C .

Sunny days: 230 days , or 2370 hours annually.

Rainfall: 600 l /m<sup>3</sup>

Wind: northwesterly and southwesterly .

Time: Central European Time + 1 hour.

Strumica (native: Струмица) is a town situated in the south-east of the Republic of Macedonia (close to the Novo Selo-Petrich border crossing with Bulgaria). The population is close to 55,000 with an absolute Macedonian majority (90%). About 150.000 people live in the region surrounding the city. The city is named after the Strumica river which runs through it. The city of Strumica is the seat of Strumica Municipality. Strumica is the main agricultural center in the Republic of Macedonia. It has many textile factories and a developed trade network.

According to the last National census from 2007 this municipality has 79.012 inhabitants.





## Roman Bath Bansko

At 12 km from the town of Strumica, at the northern foot of Mount Belasitza, located are strong hot water springs with a temperature of 72 ° C. The source is located in the village of Bansko, which is the main reason why water baths once got the present name. Near the source "Parilo" located is the Roman bath, which was built in the II century AD. This area covers more than 1500 m<sup>2</sup> and is one of the largest baths in the Balkans.

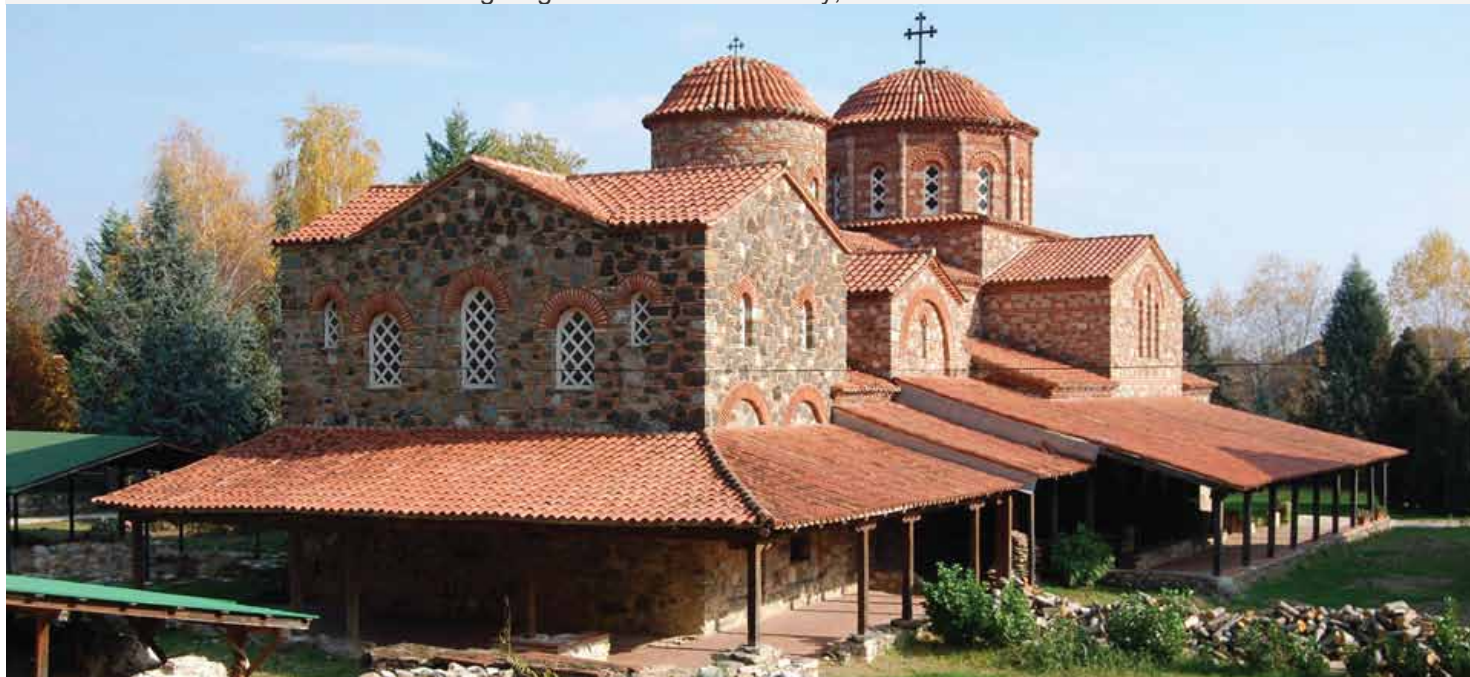
Most of the 11 rooms have different functions and are mainly built of brick and stone combined with the mortar. Heating inside was designed and constructed with a special system in which hot water was used to heat the floors and walls. The bathroom is designed like most Roman buildings and was in the spirit of the health needs of the Roman culture. The roman bath had also a dressing room (apoditerium) for the clothes, and in the area called "dipterium" the sick were massaged with oil. The room "tepidarium" was located among the hot bath (sauna) and cold bath (frigidarium). The main place was occupied by the baths and tub pool whose depth was about 1.5 m, and the pool was gained by stairs. The sunlight entered through the windows, which made private and intimate atmosphere.

Destruction of this sanatorium happened in VI century AD. Thermo sources are five in number, of which only one, is the largest expert captured. It flows into the main bath called "Turkish Bath" and four other freely break with no particular catchments, and only one part flows into the bathroom "Salandzha". The water temperature in the source does not change during the year, which proves that comes from great depth and without weathering. The temperature of the water sources is about 71 degree in the spring, which supplies the main, Turkish bath, a source that supplies "Salandzha" is a temperature of 56 degrees. The site "Roman bath" in Bansko is one of the few preserved Roman monuments of its kind in Europe.

## ST. LEONTIJ

The monastery church "St. Leontij" in Vodoca, most probably dating from Czars Samuel's period, was the seat of the Strumica Bishopric. There are indicators that lead us to believe that in the monastery, about 1000 years ago copying of the religious books was made from Greek into the Old Slav language.

Bearing in mind the fact that the fresco painting in "St. Leontij" are quite identical with the ones in the Ohrid church "St. Sofia" and the church "St. Vraci" in Kastoria, Aegean Macedonia, the age of the Vodoca church may be approximately determined: the end of the tenth and beginning of the eleventh century, and even earlier.



## THE HOLY MOTHER OF GOD ELEUSA

The monastery church in Veljusa "The Holy Mother of God Eleusa" (Gracious), was built in 1080 by the Strumica bishop Manuil. By the end of the eleventh century, i.e. somewhere about 1093, a part of its rich fresco painting was completed.

In fact, the oldest frescoes dating from the eleventh century are most preserved and are located on the southern wall, while the remains of the fresco paintings on the western and northern wall of the southern aisle and in the narthex, mainly date from the second half of the twelfth century. The church is extremely small by size and practically square shaped, its basis being in the form of a four-leaf clover. Nevertheless, as a whole, it is of remarkable value and, we could even say, a luxurious high style artistic structure





## Smolare Waterfall

It can be found above the village of Smolare, at an elevation of 630 meters, located deep in the Belasica Mountains where the Lomnica River springs hidden among the hundred-years-old beech trees. The waterfall is a unique waterfall in Macedonia with the water falling from the height of 39,5 meters, the tallest waterfall in Macedonia.

It is located above the village of Smolare in the Municipality of Novo Selo in the southeastern region of the country. The waterfall is part of the Lomnica River and is located deep in Mount Belasica at an elevation of 630 metres. Crashing down the smooth, black rock face, and surrounded by 100-year-old beech trees, this waterfall is visited by tourists throughout the year, largely by train. To reach the majestic beauty of Smolare Falls, visitors must wind their way up a nature path that includes 300 stone steps made from natural materials.





## Gabrovo Waterfall

In the underarms of the Belasica Mountain, hidden from the public eyes the Gabrovo Waterfall is situated. The location of the waterfall is right across the village of Gabrovo, after which the name of the waterfall was given, and 15 kilometers from the city of Strumica. On a distance of one kilometer there are three smaller waterfalls, high from 4 to 8 metres, and their clean ice-cold water flows out through the large and spread beech trees. The splash of the highest waterfall flows into the middle waterfall, and the middle flows into the smallest waterfall and together the water flows through the last house in the village Gabrovo. The crossing of the waterfall and the fall of the water from one to another is the reason that makes this landmark so attractive, interesting and different from the other two famous waterfalls in the region. Many tourists have found their escape in the wild nature, but the bravest and the adventurous ones can climb through the tightly and sharp rise of the paths that entwine the mysterious Belasica mountain. In this untouched idyll you can only hear the babbling of the water falling and the singing of the birds.

The waterfalls are so magnificent and mysterious, that you will get the impression that they dictate the life of the mountain. Gabrovo is a village with traditional Macedonian houses typical for the under-Belasica region. The nature is wild and unique, like time stopped in this village. The villagers say that a little is missed for this village to become the number one tourist destination not only for the tourists from Macedonia but for the ones from out of the state. They hope that this will be the beginning of a beautiful story for which none has heard, a story for a lost paradise that holds place in the middle of a century beech wood, for the untouchable heaven on Belasica for which it is to be heard from now on.



**CONTACT - INFORMATION:  
STRUMICA OPEN 2014  
Macedonia, Strumica**

---

**[www.strumicaopen.mk](http://www.strumicaopen.mk)  
E-mail: [info@strumicaopen.mk](mailto:info@strumicaopen.mk)  
Facebook: [facebook.com/StrumicaOpen](https://facebook.com/StrumicaOpen)  
Contact : ++38975387607**

---

**WELCOME TO MACEDONIA!**